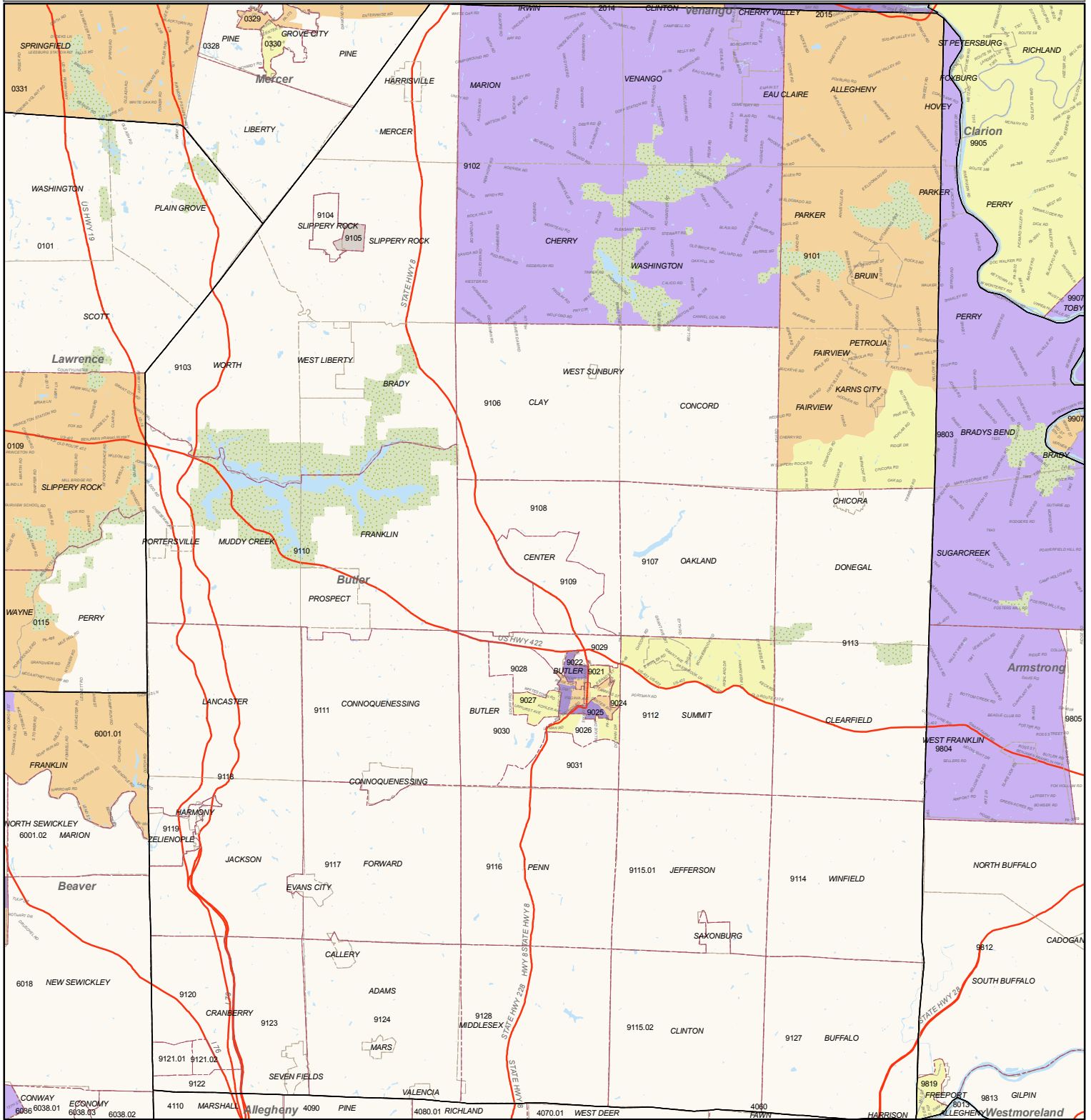


# Butler



### Qualified Need Areas

- Too few housing units
- Not AMI or Risk Score < 6
- AMI eligible + HUD risk score > 6
- Sales Price + AMI eligible + HUD risk score > 6
- Lending Problems + Sales Price + AMI eligible + HUD risk score > 6
- Increasing Lending Problems + Sales Price + AMI eligible + HUD risk score > 6

### REO Count (grid)

- 0 properties
- 1 property
- 2 properties
- 3 properties
- 4 properties
- 5 properties

### Not Eligible - Reason(s)

- Risk Score < 6 (HUD)
- Not Low/Middle/Mod eligible (HUD)
- Median sales price < 50% of county median
- Median sales price > 130% of county median

### Other Details

- Streets
- County
- Municipality
- Highways
- Water
- Non-Residential
- Census Tract