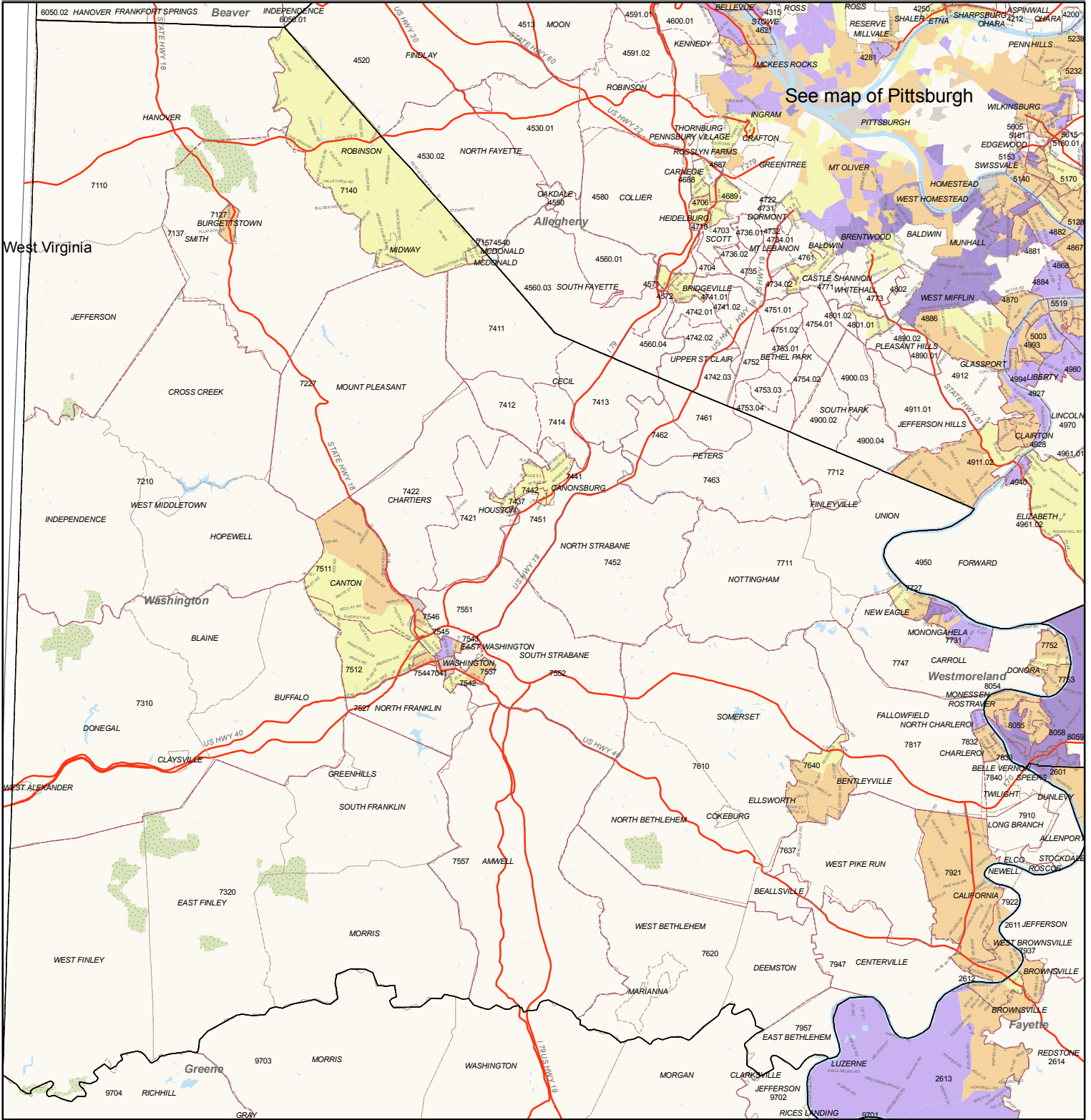


Washington



See map of Pittsburgh

Qualified Need Areas

- Too few housing units
- Not AMI or Risk Score<6
- AMI eligible+HUD risk score>6
- SalesPrice +AMIeligible+HUDrisk score>6
- LendingProblems+SalesPrice+AMIeligible+HUDrisk score>6
- IncreasingLendingProblems+SalesPrice+AMIeligible+HUDrisk score>6

REO Count (grid)

- 0 properties
- 1 property
- 2 properties
- 3 properties
- 4 properties
- 5 properties

Not Eligible - Reason(s)

- Risk Score <6 (HUD)
- Not Low/Middle/Mod eligible (HUD)
- Median sales price <50% of county median
- Median sales price >130% of county median

Other Details

- Streets
- Highways
- County
- Municipality
- Census Tract
- Water
- Non-Residential